

Animals Used in Experiments at UCI 2008-2012

Prepared by
[Progress for Science](#)
for Irvine Students Against Animal Cruelty

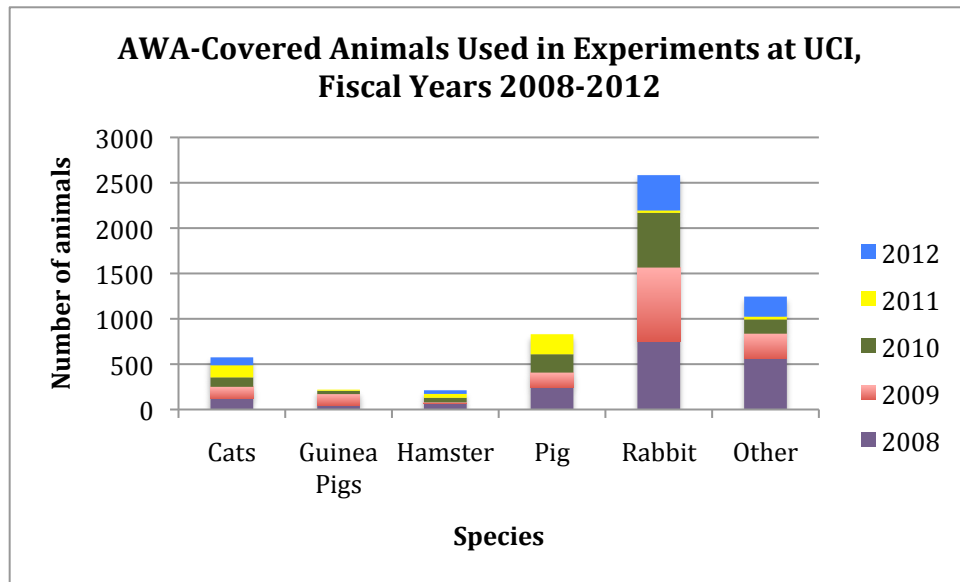
Following are the animal usage numbers for labs at the University of California, Irvine (UCI).¹ Please note that these numbers represent only those animals protected under the federal law, the Animal Welfare Act (AWA). The AWA is the only federal law that protects animals used in experiments and most animals are not protected under this law. In the case of animal experimentation, it is estimated that at least 95% of animals used in experiments in the United States are *excluded* from protection under the AWA. The definition of animal, according to this law is:

“*Animal* means any live or dead dog, cat, nonhuman primate, guinea pig, hamster, rabbit, or any other warm blooded animal, which is being used, or is intended for use for research, teaching, testing, experimentation, or exhibition purposes, or as a pet. This term *excludes* birds, rats of the genus *Rattus*, and mice of the genus *Mus*, bred for use in research; horses not used for research purposes; and other farm animals, such as, but not limited to, livestock or poultry used or intended for use as food or fiber, or livestock or poultry used or intended for use for improving animal nutrition, breeding, management, or production efficiency, or for improving the quality of food or fiber. With respect to a dog, the term means all dogs, including those used for hunting, security, or breeding purposes” (emphasis added).

AWA-Covered Animals Used in Experiments at UCI, Fiscal Years 2008-2012

Year	Cats	Guinea Pigs	Hamsters	Pigs	Rabbits	Other Animals	Total
2008	116	44	74	240	745	557	1776
2009	134	126	4	167	820	279	1530
2010	104	37	51	202	603	156	1153
2011	134	12	43	221	27	32	469
2012	87	0	40	0	389	221	737
TOTAL	575	219	212	830	2584	1245	5665

¹ All data was retrieved on October 17, 2013.



The AWA does not protect most animals used in experiments, nor does it require universities to report how many non-covered animals are used in experiments. Therefore, it is unclear how many animals are used in experiments at UCI. However, it is estimated that on average, in the US, 95% of animals used in research are not covered by the AWA. If UCI is similar to the rest of the country, based on animal usage numbers from 2008-2012, we estimate between 9,000 to 36,000 animals per year are used in experiments, with an average of 22,600 animals used in experiments each year.